

Point #	Row Description	Point #	Row Description	Point #	Row Description
339	10" OAK	677	10" OAK	870	12" OAK
346	10" OAK	678	10" OAK	871	10" OAK
399	10" OAK	749	16" OAK	976	10" OAK
400	10" OAK	762	13" OAK	999	12" OAK
411	18" HACKBERRY	763	13" OAK	1172	12" OAK
412	10" OAK	764	11" OAK	1173	12" OAK
415	10" OAK	790	9" OAK	1174	12" OAK
472	13" OAK	791	12" OAK	1178	12" OAK
473	8" OAK	821	12" OAK	1213	12" OAK
478	14" OAK	822	12" OAK	1214	12" OAK
667	10" OAK	823	14" OAK	1215	10" OAK
668	10" OAK	824	12" CREPE MYRTLE	1233	12" OAK
669	CREPE MYRTLE	825	12" CREPE MYRTLE	1234	10" OAK
670	10" CREPE MYRTLE	826	12" CREPE MYRTLE	1235	12" OAK
671	10" CREPE MYRTLE	854	12" OAK	1236	8" OAK
672	10" CREPE MYRTLE	857	15" OAK	1255	18" OAK
673	10" CREPE MYRTLE	866	6" CREPE MYRTLE	1263	12" OAK
674	10" OAK	867	12" CREPE MYRTLE	1264	12" OAK
675	10" OAK	868	12" CREPE MYRTLE	1279	12" OAK
676	10" OAK	869	10" OAK	1280	12" OAK

**LEGEND**

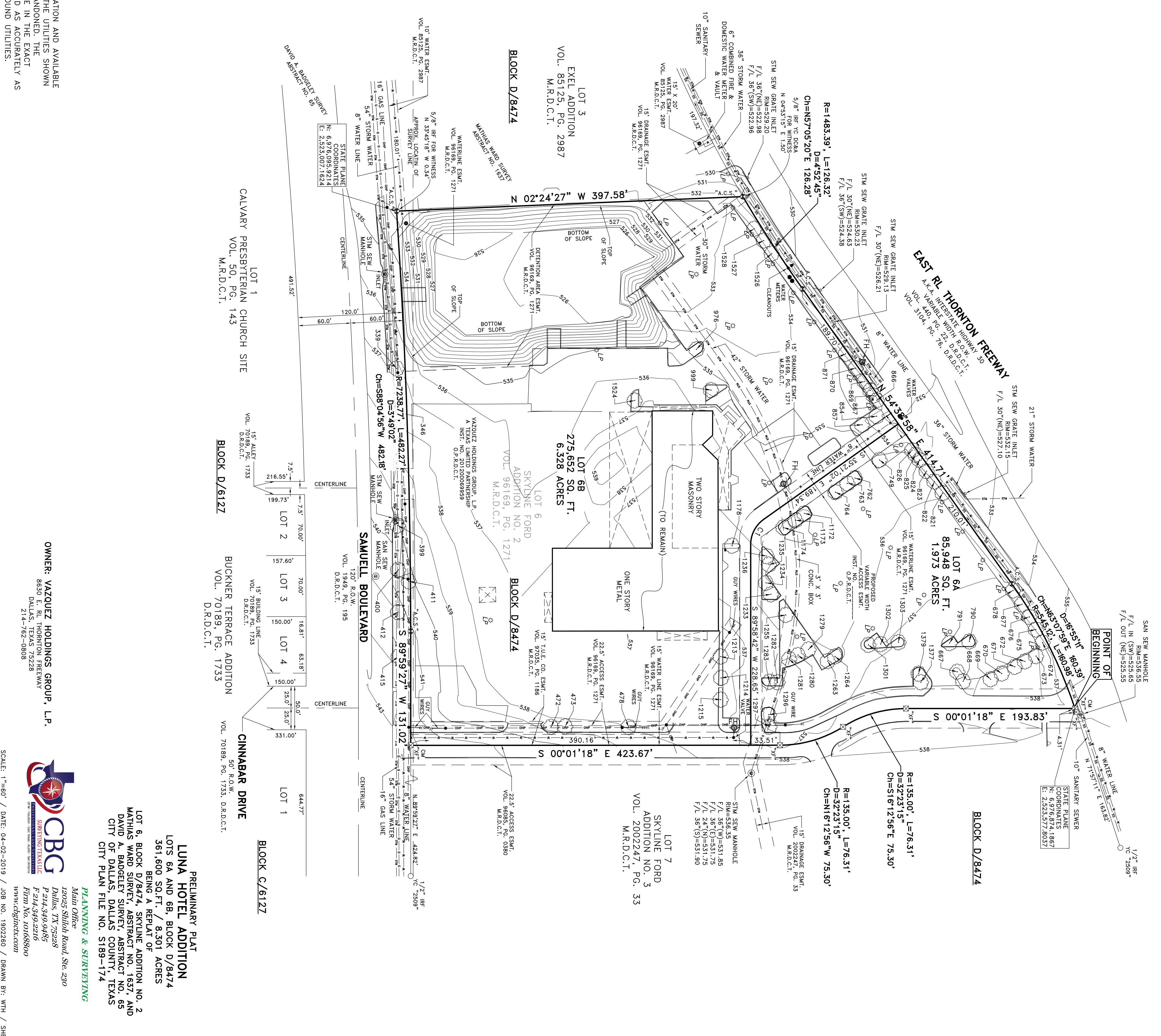
D.R.D.C.T. = DEED RECORDS, DALLAS COUNTY, TEXAS  
M.R.D.C.T. = MAP RECORDS, DALLAS COUNTY, TEXAS  
O.P.R.D.C.T. = OFFICIAL PUBLIC RECORDS, DALLAS COUNTY, TEXAS  
INST. NO. = INSTRUMENT NUMBER  
VOL., PG. = VOLUME, PAGE  
CM = CONTROLLING MONUMENT  
R.O.W. = RIGHT-OF-WAY  
E.S.W.T. = EASEMENT  
APPROX. = APPROXIMATE  
IRP = IRON ROD FOUND  
"X" = "X" FOUND IN CONCRETE  
"Y" = "Y" FOUND IN CONCRETE  
"Z" = "Z" FOUND IN CONCRETE  
"AA" = "AA" FOUND IN CONCRETE  
"BB" = "BB" FOUND IN CONCRETE  
"CC" = "CC" FOUND IN CONCRETE  
"DD" = "DD" FOUND IN CONCRETE  
"EE" = "EE" FOUND IN CONCRETE  
"FF" = "FF" FOUND IN CONCRETE  
"GG" = "GG" FOUND IN CONCRETE  
"HH" = "HH" FOUND IN CONCRETE  
"II" = "II" FOUND IN CONCRETE  
"JJ" = "JJ" FOUND IN CONCRETE  
"KK" = "KK" FOUND IN CONCRETE  
"LL" = "LL" FOUND IN CONCRETE  
"MM" = "MM" FOUND IN CONCRETE  
"NN" = "NN" FOUND IN CONCRETE  
"OO" = "OO" FOUND IN CONCRETE  
"PP" = "PP" FOUND IN CONCRETE  
"QQ" = "QQ" FOUND IN CONCRETE  
"RR" = "RR" FOUND IN CONCRETE  
"SS" = "SS" FOUND IN CONCRETE  
"TT" = "TT" FOUND IN CONCRETE  
"UU" = "UU" FOUND IN CONCRETE  
"VV" = "VV" FOUND IN CONCRETE  
"WW" = "WW" FOUND IN CONCRETE  
"XX" = "XX" FOUND IN CONCRETE  
"YY" = "YY" FOUND IN CONCRETE  
"ZZ" = "ZZ" FOUND IN CONCRETE

**GENERAL NOTES**

1) BEARINGS ARE BASED ON THE STATE PLANE COORDINATE SYSTEM, TEXAS NORTH CENTRAL ZONE 4202, NORTH AMERICAN DATUM OF 1983 (2011).  
2) THE PURPOSE OF THIS PLAN IS TO CREATE TWO LOTS FROM ONE.  
3) LOT TO LOT DRAINAGE WILL NOT BE ALLOWED WITHOUT ENGINEERING SECTION APPROVAL.  
4) ANY STRUCTURE NEW OR EXISTING MAY NOT EXTEND ACROSS NEW PROPERTY LINES.  
5) COORDINATES SHOWN HEREON ARE TEXAS STATE PLANE COORDINATE SYSTEM, NORTH CENTRAL ZONE 4202, NORTH AMERICAN DATUM OF 1983 ON GRID COORDINATE VALUES. NO SCALE AND NO PROJECTION.

**UTILITY STATEMENT**

THE UTILITIES SHOWN HAVE BEEN LOCATED FROM FIELD SURVEY INFORMATION AND AVAILABLE CONSTRUCTION DRAWINGS. THE SURVEYOR MAKES NO GUARANTEE THAT THE UTILITIES SHOWN COMPRISE ALL SUCH UTILITIES IN THE AREA, EITHER IN SERVICE OR ABANDONED. THE SURVEYOR FURTHER DOES NOT WARRANT THAT THE UTILITIES SHOWN ARE IN THE EXACT LOCATION INDICATED ALTHOUGH HE DOES STATE THAT THEY ARE LOCATED AS ACCURATELY AS POSSIBLE. THE SURVEYOR HAS NOT PHYSICALLY LOCATED THE UNDERGROUND UTILITIES.



**OWNER: VAZQUEZ HOLDINGS GROUP, L.P.**  
8630 E. R.L. THORNTON FREEWAY  
DALLAS, TEXAS 75228  
214-762-0808

**PLANNING & SURVEYING**  
Main Office: 12025 Shiloh Road, Ste. 290, Dallas, TX 75228  
P: 214-349-9455  
F: 214-349-2216  
Firm No. 70168800  
www.cbgsurvey.com

SCALE: 1"=60' / DATE: 04-02-2019 / JOB NO. 1902260 / DRAWN BY: WTH / SHEET 1 OF 2